



**When Adam speaks about Katie, his late wife, there's a spark in his voice—part laughter, part love, part lingering grief. Katie, he says, was a “quirky, wonderful character,” with a free spirit and irrepressible joy for life. The kind of woman who would bake a cake just to eat it with her hands, laugh maniacally while running through tunnels with the kids, and dye her hair bright blue just because she could.**

Adam met Katie when he was just 22, working at Noel Leeming. Their friendship blossomed into something more over years of getting to know each other and weekends spent driving between Christchurch and Nelson to spend time together. When the time was right, Adam packed up his life and moved to be with Katie and her two young sons. He jokes about the “instant family” and the chaos that followed—but behind the humour is a deep admiration for the woman who changed his life.

Katie's cancer diagnosis came like a jolt. What started as a worrying mass in her breast turned into surgeries, chemotherapy, and eventually, a devastating metastasis to her liver. Through it all, Katie remained fiercely herself—determined to live, to laugh, and to find joy even in the darkest days.

She was just 36 years old when she died.

Although Katie wished to spend her final months at home, her illness became too complex to manage without additional care. Over the

## A Love That Lingers: Adam and Katie's Hospice Journey

ten months she was supported by Nelson Tasman Hospice at home, Katie was in and out of the inpatient unit on Suffolk Road for periods of respite and symptom management. Despite the circumstances, she found comfort there. The peaceful environment, the privacy of her own room, and the gardens outside her window helped bring calm during difficult times.

Adam admits he didn't know what hospice was before Katie needed it. What they found, he says, was more than medical care—it was peace. “Hospice felt like a sanctuary,” he recalls. “Private rooms, beautiful gardens, people who cared without hovering. It wasn't invasive. It was gentle.”

Katie would stay for a few days at a time, never more than a week, when things became too hard at home. Adam was

there most nights. He even brought Katie's mischievous bird, Tiger, to visit—a parrot who knew only one word (“peekaboo”) but brought smiles and a bit of cheek to the quiet halls.

The family also received support from the Nelson Tasman Hospice clinical psychologist and social worker—something Adam says made a real difference, not only for him and Katie, but for the children as well.

In November 2020, amid the treatments and the uncertainty, Adam and Katie got married. “She wanted a ring,” he laughs, “and somehow that turned into a wedding.” It was perfectly Katie—

unexpected, heartfelt, and full of love. Less than a year later, on the one night Adam wasn't by her side, Katie passed away.

That remains his greatest sorrow.

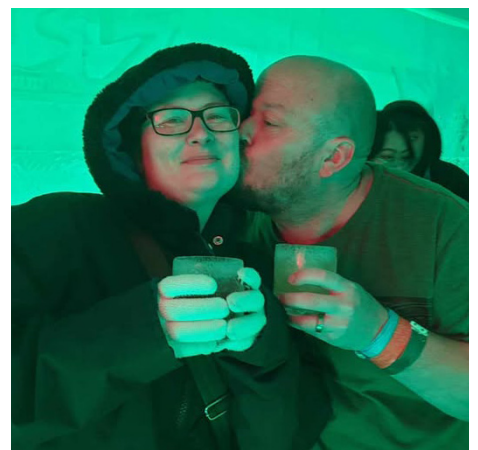
Now, Adam volunteers at Founders Park, slowly rebuilding life in the wake of loss. He still treasures photos and videos of Katie—images that capture her wild laughter and the deep, joyful connection they shared. He's embraced by a supportive community and surrounded by memories, both sweet and painful.

Hospice, he says, gave Katie dignity. It gave their family time and space. And for Adam, it was the difference between facing loss alone or being gently held through it.

“I wouldn't have made it without you,” he says.

Adam hopes that by sharing their story, others might feel less afraid of what hospice is—and more open to the care and comfort it offers. “There's nothing to be ashamed of. Hospice isn't a place to fear—it's a place of peace.”

*“Hospice isn't a place to fear - it's a place of peace.”*



# Thank You to our Grant Providers: The Lottery Grants Board & NZCT

**Nelson Tasman Hospice is grateful to the Lottery Grants Board and the New Zealand Community Trust (NZCT) for their generous support of our services. Community grants such as these play a vital role in ensuring that we can continue to provide compassionate specialist palliative care to those in need, throughout the Nelson Tasman region.**

The Lottery Grants Board, through the Lottery West Coast/Nelson/Marlborough Community Committee, recently provided us with a \$23,000 grant toward the operational costs of our Allied Health team. This crucial funding recognises the importance of delivering evidence-based, holistic treatment to patients and their whānau/families. Allied Health services—provided by our Social Workers, Clinical Psychologists and Physiotherapist—are an essential part of the interdisciplinary care we offer. These professionals help patients and their whānau navigate the emotional, psychological, and practical challenges of life-limiting illness.

Thanks to the Lottery Grants Board's

support, we can continue offering this wraparound care, strengthening our commitment to patient-centred service.

We are equally thankful to the New Zealand Community Trust, who recently granted \$50,000 to support the position of our Clinical Nurse Lead, Helen Lynch, in the Specialist Palliative Care Unit (SPCU). Helen brings nearly three decades of nursing experience and a passionate commitment to excellence in palliative care. Her leadership plays a key role in coordinating patient admissions, planning discharges and overseeing quality improvement.

Each day, Helen collaborates with our interdisciplinary team to ensure that patients and their whānau receive seamless, holistic care. As Helen says, "It certainly is a privilege to work at Nelson Tasman Hospice and be part of such a great team who do amazing work supporting the Nelson Tasman community. Thanks to NZCT for their generosity."



*Paul Matheson, funding advisor for NZCT with  
Helen Lynch, SPCU Clinical Nurse Lead.*

Our heartfelt thanks also extend to the local venues that help make these grants possible, including Hotel Motueka and Ocean Lodge—your support through NZCT makes a lasting impact in our community.

It takes a community to make a hospice happen. Thank you to the Lottery Grants Board and NZCT for being part of our compassionate community.

If you know of any trusts or foundations who may be interested in supporting our work, we'd love to hear from you.

## Nelson Pine Industries Continue their Support

**Nelson Pine Industries Limited (NPI) continues to demonstrate their commitment to our community by supporting specialist palliative care in the region.**

Since the early 2000's, the entire staff at NPI have forgone the gift of a Christmas ham in order to make a donation to Nelson Tasman Hospice. Inspired by two colleagues who required hospice services, the NPI team are committed to their partnership with Nelson Tasman Hospice in support of the vital services provided to our shared community.



*Tony Gray, Nelson Tasman Hospice Chief Executive;  
Grant Pahl, Nelson Pine Systems Manager; Donna  
Ching-Tregidga, Nelson Tasman Hospice Head of  
Supporter Engagement and Income Development, on  
a recent visit to Nelson Pine.*

Nelson Tasman Hospice's Chief Executive, Tony Gray, Head of Supporter Engagement and Income Development, Donna Ching-Tregidga and Volunteer Services Manager, Jo Clark visited the staff at NPI and enjoyed a tour of the premises learning more about the day to day. It was a great opportunity to hear from NPI staff what supporting hospice means to them and share our appreciation for their ongoing support. Tony shared a bit about what it means to have these incredible supporters work alongside us.

"Being able to thank Nelson Pine Industries' colleagues face to face and hear directly from those who have had loved ones experience local hospice services is a real privilege. Having local people support their local community in this way is really special. We are heartened knowing we have NPI's support in the work we do each day."

"As a major sponsor and a Kahikatea supporter, we are so proud to work alongside NPI. Their ongoing sponsorship funding enables Nelson Tasman Hospice to be there every day for patients facing a life limiting illness. With 80% of our care provided out in the community, wherever a patient calls home, these vital services could

not happen without the contribution of local businesses and their teams."

These funds mean a lot to the patients we support; this generous ongoing support enables us to be there for families in their home, offering equipment free of charge to ease mobility and comfort, alongside home visits providing clinical care and reassurance for carers. We also help patients within the Daniel O'Brien Wing inpatient unit, managing symptoms medically and with specialised care, with space for family to be close by. Whānau are also supported by our allied health team to help them navigate their grief in bereavement.

NPI also supported Nelson Tasman Hospice by making a significant product donation supplying Nelson Pine LVL® (laminated veneer lumber), a high-performance engineered wood product, for use in the Hospice Hub, completed in 2019, in Suffolk Road, Stoke.

Thank you to the 270 people who work in the Lower Queen St, Richmond, business – across manufacturing, production, marketing and administration. We could not continue our tireless efforts without your ongoing dedication to your community.



# Community Sparkles at NBS Dancing for a Cause 2025 - A Record-Breaking Weekend

The glitter has settled, and the scores are in: NBS Dancing for a Cause 2025 lit up the Trafalgar Centre this past weekend with two shows that dazzled more than 4,000 audience members, raised hundreds of thousands of dollars, and brought the Nelson Tasman community together in extraordinary support of Nelson Tasman Hospice.

With the final numbers in, NBS Dancing for a Cause 2025 raised \$670,000, a record-breaking total that will make a lasting impact on the work of Nelson Tasman Hospice. This incredible amount will directly support the care of approximately 210 patients and their whānau every month, ensuring that specialist palliative care remains accessible, compassionate, and free for all who need it.

Held over two spectacular nights on May 16 and 17 at the Trafalgar Centre, this year's event once again showcased the power of community. Ten local personalities, each paired with a trained dance partner, took to the stage and shared not just their dance moves, but their personal connections to hospice and what this cause means to them.

The contestants for 2025 were Wendy Blincoe, Steph Collett, Richard Norriss, Rhys Black, Lauretta Haskell, Jayde Howe, Ed Shuttleworth, Campbell Rollo, Blair Cameron and Anna Hay.

"The energy across both nights was absolutely contagious," says organiser and dance instructor Emma Silke-French. "What stood out was the heart

behind every performance, every fundraiser, and every moment shared on that stage."

## Event Highlights

### ★ Overall Winner

The coveted Judges' Award went to Rhys Black and his partner Rebecca Higham, whose breathtaking jive performance captivated the panel of professional judges and earned top marks

### ★ Yondi Foundation People's Choice Award

Voted by the audience, this year's Yondi Foundation People's Choice Award was won on both nights by Ed Shuttleworth, CE of Sport Tasman, and his partner Brooke Silke-Atkins, for a captivating tango that brought the house down.

### ★ Most Funds Raised

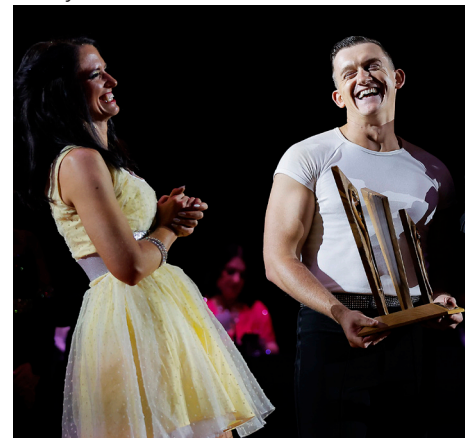
A special mention goes to Jayde Howe, BNZ Financial Adviser, who not only delivered an elegant rumba but also raised an astounding \$250,000 through events including a G.J. Gardner home build, a quiz night, and a Gala Dinner. Her fundraising efforts were a shining example of generosity and commitment.

Through raffles, community events, storytelling, and tireless practice, each of this year's contestants brought their community along for the journey - all in support of hospice care in the Nelson Tasman region.

Tony Gray, Chief Executive of Nelson Tasman Hospice, says:

"This event is not only a highlight of our community calendar — it's a lifeline for our services. We are overwhelmed by the generosity, time, and talent poured into making this weekend such a success. On behalf of all our colleagues, patients and families - thank you."

We extend our heartfelt thanks to the Dancing for a Cause Charitable Trust, every single contestant, dancer, sponsor, volunteer, and the thousands who attended, donated, and supported the event. This incredible result wouldn't be possible without the combined effort and generosity of so many.



Rhys Black and Rebecca Higham



Ed Shuttleworth and Brooke Silke-Atkins



Jayde Howe and Anthony Hewson  
(Photos by Evan Barnes/Shuttersport Limited)



**A unique fabric and sewing sale fundraising for Nelson Tasman Hospice!**

**Sat 28 June 2025 HOPE HALL - 184 MAIN ROAD, NELSON**

**Discover vintage and modern fabric treasures, haberdashery, patterns, buttons and sewing supplies.**

**[www.fabricabrac.com/nelson/](http://www.fabricabrac.com/nelson/)**

# Jaida's Practicum with Purpose

When we think of hospice volunteers, we might picture people serving cups of tea, sorting donations, or offering a comforting hand to patients and families. But volunteering comes in many shapes and forms—and Jaida Steenhuis is a perfect example of how you can also support hospice services by sharing your professional skills to support vital project work.

Jaida is a Master of Public Health student from Brock University in Canada, currently completing a 420-hour practicum placement at Nelson Tasman Hospice. While she may not be found in the inpatient unit or in one of our shops, her contribution behind the scenes is making a real difference.

Since February, Jaida has been working closely with our leadership team on quality improvement initiatives. One of her key projects has been redesigning and automating the Patient and Whānau Satisfaction Survey process. This important survey collects feedback at both admission and discharge, and

Jaida's work means the results are now automatically collected, analysed, and ready to inform service improvements in real time.

She's also been rolling up her sleeves on another big task - digitising and streamlining our internal audit processes. By helping automate these systems, Jaida is reducing the time spent on admin and enabling better accuracy, transparency, and data accessibility. These behind-the-scenes improvements may not be visible to patients and whānau, but they play a big role in helping our colleagues deliver high-quality, responsive care.

It's a big change from the hands-on volunteer roles she's done in the past - like leading physical activity programs for the neurodiverse community - but Jaida sees this project-based work as just as meaningful. "I think it's important to give back," she says. "It doesn't have to be 25 hours a week - even a couple of hours here and there can really make a difference."

For Jaida, this placement has not only helped her apply her studies in a real-world setting—it's also sparked a growing interest in project management. While she'll be heading back to Canada in July, she'll take with her the experience of contributing to a community she's grown to love.

As volunteering evolves, stories like Jaida's remind us that there's no one "right" way to give. Whether you have an afternoon to spare or a specialised skillset to share, there's a place for you at Hospice. To learn more about how to get involved, contact - [volunteers@nelsonhospice.org.nz](mailto:volunteers@nelsonhospice.org.nz)



## Wish List

By donating for specific items, you have a tangible sense of the impact of your gift; whether it be equipment, which is loaned free of charge to families in their homes or placed in our SPCU, or stationery to support our daily business, each item you donate helps make a difference to our patients every day.

- \$23 could fund a patient's meals for a day within our Specialist Palliative Care Unit
- \$237 Recycling initiative - Empty Blister Packs - Zero Waste Box
- \$303 Recycling initiative - Disposable Gloves - Zero Waste Box
- \$430 per box of Copy paper for daily business support - ongoing cost
- \$552 per item Wheelchair for community programme x3
- \$700 per box NZ Post 500 pre-paid envelopes - ongoing cost
- \$1219 Rehab chair Bariatric
- \$2557 Sara Stedy - transfer aid



*Our wonderful equipment volunteers taking some of our equipment to patients in the community.*

**Gift Comfort: \$240 one off / \$20 monthly** - Gift a family reassurance that they have the equipment they need at home to support their loved one.

**Gift Care: \$1,200** - Ensure patients can be cared for at home or in our Specialist Palliative Care Unit, with the specialist support of hospice care.

You can also make a one-off or regular gift to support hospice services in Nelson Tasman.

If you would like to fund an item from our Wish List, please contact Rachel Lake on 0272221344 or [rachel.lake@nelsonhospice.org.nz](mailto:rachel.lake@nelsonhospice.org.nz). We would love to hear from you.

## Yes! I would like to support the future of Hospice services in our region.

I would like to make a donation of: ☐ \$10 ☐ \$20 ☐ \$30 ☐ \$50 ☐ \$100 ☐ \$ \_\_\_\_\_

I am paying by: ☐ Mastercard ☐ Visa

Credit card #

Expiry: \_\_\_\_ / \_\_\_\_ 3 digit security code: \_\_\_\_\_

Name: \_\_\_\_\_ Address: \_\_\_\_\_

Phone: \_\_\_\_\_ Email address: \_\_\_\_\_

Signature: \_\_\_\_\_

To make a direct credit donation using online banking, please use NBS bank account # 03 1354 0532930 00 Please include your last name and phone number on the two reference lines

Registered charity CC58048

Please post completed form with donation to: Nelson Tasman Hospice, 331 Suffolk Rd, Stoke Nelson 7011

Names and addresses are held in accordance with the Privacy Act 1993 and are only used for Nelson Tasman Hospice purposes.

This newsletter is sponsored by Printhouse

**printhouse**  
look great in print

[www.nelsonhospice.org.nz](http://www.nelsonhospice.org.nz)

331 Suffolk Rd, Stoke. T: 03 546 3950. Follow us on

