



2025

Palliative Care Education Programme



Scan to view
education workshops





Vision and Mission Statement



Our Vision

To Care Always - Atawhaitia, Manaakitia Mō Ake Tonu

All people in the Nelson Tasman community have access to high quality compassionate palliative care.

Our Mission Statement

To assist patients to make the most of the life that remains and to ensure that patients die comfortably, with dignity and in the place of their choice. To provide support and care for the family and close friends during the patient's illness and in bereavement.

We express our mission statement through these values.

Respect & Dignity

Te Whakaaro nui ki te Tangata, te Hāpai i tōna Mana

Advocacy

Te Tū hei Kaikōkiri, hei Māngai mō te Iti me te Rahi

Compassion

Te Ngākau Aroha, te Ngākau Atawhai

Quality

Kia Tuawhiti Tonu

Trust

Te Whakapono

Contents



Nelson Tasman Hospice Trust, Vision and Mission Statement	1
Welcome and Registration & Contact Details	3
Palliative Care Consult Services	4
Community Engagement Building Compassionate Communities	5
Syringe Driver Workshops for Hospice, Aged Residential Care & District Nurses	6
Syringe Driver Workshops for Health New Zealand Te Whatu Ora Nelson Nurses	7
Hospice New Zealand Fundamentals of Palliative Care	8 - 9
Hospice New Zealand Palliative Care Lecture Series	10
Hospice New Zealand Palliative Care Lecture Series Programme	11
Clinical Skills Series in Palliative Care	12
Palliative Care for Caregivers	13
Dying to Know about Dying Matters (For the general public)	14
The Better Endings Project	15
Disability & Equity in Palliative Care	16
Lung Cancers in Palliative Care	17
Supporting Rural Communities in Palliative Care	18
Calendar	19 - 21

Welcome

Nelson Tasman Hospice is a specialties palliative care service.

The Education team offers a wide range of learning opportunities for health care professionals and support workers working at Health New Zealand Te Whatu Ora, in Aged Residential Care and in the community.

Our education focus is to support and upskill primary palliative care providers.

Working in partnership with you

As a specialist palliative care service, we welcome the opportunity to work with our stakeholders to assist in building knowledge and competence in palliative care.



Nelson Tasman Hospice Education Team
L – R
Chris Dunn Nurse Educator
Barb Thomas Education Administrator
Annie Wallace Nurse Educator

Contact details - Nelson Tasman Hospice Education Team

Chris Dunn Nurse Educator

chris.dunn@nelsonhospice.org.nz

Annie Wallace Nurse Educator

annie.wallace@nelsonhospice.org.nz

Barb Thomas Education Administrator

education@nelsonhospice.org.nz

A: 331 Suffolk Road, Stoke, Nelson 7011

P: (03) 546 3950

W: www.nelsonhospice.org.nz

W: [Education - Nelson Tasman Hospice \(nelsonhospice.org.nz\)](http://www.nelsonhospice.org.nz/education)

Registrations: Register on our Hospice Website <https://www.nelsonhospice.org.nz/education> via Eventbrite or as advertised in the workshop promotional flyer. *(Workshops are available to register for approximately one month prior to the date)*

Thank you to FUJIFILM Business Innovation Nelson for sponsoring the printing of this programme.

FUJIFILM



Scan for upcoming workshops

Palliative Care Consult Services

Hospital Liaison and Aged Residential Care



New Zealanders are living longer, and our population is aging which presents many challenges to the healthcare sectors. Population projections show that while there are currently about 842,000 people aged 65 or over, this number will continue to increase over the next 50 years. This equates to approx. 80 people per day. The number of people in these older ages is estimated to reach 1.3 million around 2040, and 1.5 million by the 2050s (Statistics New Zealand, 2022).

A dedicated palliative care interdisciplinary team (IDT), work alongside staff at Health New Zealand Nelson Marlborough and in Aged Residential Care (ARC) to provide a consultancy service to support the delivery of specialist palliative care, for all inpatients and residents.

The Education Team can support the IDT by providing opportunities for palliative care education to build knowledge, to enhance skills and confidence for those providing care to persons with a life limiting illness.

References:

Ministry of Health (MOH) Palliative Care Advisory Panel. (2016). Need for Palliative Care in New Zealand. MOH, Wellington, New Zealand. <https://nzaca.org.nz/wp-content/uploads/2020/06/Need-for-Palliative-Care-in-NZ-vMOH-PCAP-June-2016.pdf>

Statistics New Zealand. (2022). One million people aged 65+ by 2028. Wellington, New Zealand. <https://www.stats.govt.nz/news/one-million-people-aged-65-by-2028/>

Community Engagement Building Compassionate Communities



While compassionate communities are diverse and locally responsive, the fundamental underpinnings remain common. Compassionate communities involve the activation of community members to care for each other. Compassionate communities draw on community strengths, resources, and understanding about death and dying to provide care and support to those nearing the end of life.

Nelson Tasman Hospice is dedicated to working with a diverse range of communities. Building compassionate communities and social networks that assists patients and families/whānau to care for their loved ones in a variety of settings, in the hospice, in hospital in aged residential care (ARC) or at home.

We provide palliative care and end of life education to health professionals and community workers. We aim to engage with grassroots communities to demystify death and dying.

Our Education Team with the support of our volunteer and interdisciplinary teams can work with you to facilitate conversations, co design workshops or seminars, to meet your needs using a range of teaching learning modalities.

Syringe Driver Workshops for Registered Nurses, EN's, Aged Residential Care & District Nurses

The programme assists **Registered Nurses (RNs) and Enrolled Nurses (ENs) working in Aged Residential Care (ARC) and District Nursing (DNs)** to obtain the skills and knowledge required to manage a syringe driver in their work setting. * A pre programme workbook will be emailed to participants prior to the workshop.

Successful completion of a written competency test is required for certification.

Workshops are facilitated on site at Nelson Tasman Hospice or as advertised off site.



- **Please note: For Health New Zealand Nelson Marlborough Registered Nurses** there is a different learning module - See dates on the next page or contact the hospice via email: education@nelsonhospice.org.nz or phoning 03 546 3950

Target audience:	Registered Nurses & Enrolled Nurses working in Aged Residential Care (ARC) or in a community setting
Dates:	As noted in the education programme
Duration:	2 hrs.
Maximum attendees:	10. Registration is essential
Register:	Register on our Hospice Website via Eventbrite https://www.nelsonhospice.org.nz/education or as advertised in the workshop promotional flyer. <i>(Workshops are available to register for approximately one month prior to the date)</i>

* **Motueka venues** will be advised with the education promotional flyer.

Dates: 2025	Time	Target Audience	Venue
Thursday 16 January	1000 - 1200	ARC/DN/EN	Hospice
Friday 14 February	1000 - 1200	ARC/DN/EN	Hospice
Tuesday 11 March	1300 - 1500	ARC/DN/EN	Hospice
Friday 11 April	1300 - 1500	ARC/DN/EN	Hospice
Thursday 7 May	1000 - 1200	ARC/DN/EN	Hospice
Wednesday 19 June	1300 - 1500	ARC/DN/EN	Hospice
Thursday 17 July	1000 - 1200	ARC/DN/EN	Hospice
Thursday 21 August	1300 - 1500	ARC/DN/EN	Motueka
Tuesday 16 September	1300 - 1500	ARC/DN/EN	Hospice
Thursday 30 October	1300 - 1500	ARC/DN/EN	Hospice
Wednesday 5 November	1000 - 1200	ARC/DN/EN	Hospice
Thursday 11 December	1300 - 1500	ARC/DN/EN	Motueka

Syringe Driver Workshops for Health New Zealand Nelson Marlborough Registered (RN) and Enrolled (EN) Nurses

Health New Zealand Te Whatu Ora Nelson Marlborough



This syringe Driver Workshop is for Registered Nurses and Enrolled Nurses Registered Nurses employed by Health New Zealand Te Whatu Ora and delivered onsite at Nelson Hospital.

- **Please note:** This workshop is **NOT** suitable for Registered Nurses & Enrolled Nurses working in Aged Residential Care (ARC) as it is a different learning platform and will not be the right competency you require for your workplace.

The syringe driver workshop provides the knowledge and practical skills required to manage a syringe driver in the practice setting and a knowledge of medicines for end of life symptom management. A pre-eLearning package is required prior to the workshop and will be emailed to you on registration. Once completed please send a copy of your certificate via email to education@nelsonhospice.org.nz

Target audience:	Registered Nurses and Enrolled Nurses employed by Health New Zealand Te Whatu Ora (Not suitable for Aged Residential Care Nurses or EN's)
Dates:	As advertised
Duration:	1.5 hrs.
Cost:	No charge
Maximum attendees:	10. Registration is essential
Venue:	Medical Unit Seminar Room, Franklyn Street, Nelson
Register online:	Register on our Hospice Website via Eventbrite https://www.nelsonhospice.org.nz/education or as advertised in the workshop promotional flyer. (Workshops are available to register for approximately one month prior to the date)

Dates: 2025	Time	Target Audience	Venue
Wednesday 18 February	1300 - 1500	Registered Nurses and Enrolled Nurses employed by Health New Zealand Te Whatu Ora	Medical Unit Seminar Room
Wednesday 11 June	1300 - 1500	Registered Nurses and Enrolled Nurses employed by Health New Zealand Te Whatu Ora	Medical Unit Seminar Room
Wednesday 26 November	1300 - 1500	Registered Nurses and Enrolled Nurses employed by Health New Zealand Te Whatu Ora	Medical Unit Seminar Room

Fundamentals of Palliative Care Programme



Introduction to the *Ngā Tūāpapa o te Pairuri Tāngata* **Fundamentals of Palliative Care** programme

This pack provides information to set you up before you get started, including what is covered in the programme, how to sign up, what you need to do to complete the programme and where to go for support.

About the Knowledge Hub

Knowledge Hub is brought to you by Te Kahu Pairuri o Aotearoa Hospice New Zealand. Its aim is to provide health professionals and carers with education and resources to enable the provision of skilled and competent palliative care.

About the Fundamentals of Palliative Care Programme

The Fundamentals programme will give you an overview of how to care for people with palliative care needs in your role as a healthcare worker. Being educated about palliative care will help you improve the assessment and outcomes for people in your care, their family and whānau, as well as yourself and other healthcare workers.

There are four topics:

Essence

Essence focuses on what palliative care is, who is involved and cultural considerations. It will help you understand the essence and principles of palliative care and what you need to be prepared for when caring for people in New Zealand at the end of life.

The palliative care approach

This topic focuses on the palliative care approach and how understanding ethics, communication and spirituality can help you improve as a healthcare worker and support those receiving care.

Managing pain and long-term illness

Managing pain and long-term illness is split into two subtopics: In Pain, other symptoms and pharmacology, you will learn the basics of pharmacology, and how you can recognise pain and help people and their family and whānau through it. In Chronic illness and dementia, you will learn how to recognise chronic illness and dementia, the challenges that people diagnosed with these face, and how you can support them.

Care and support at the end of life

Care and support at the end of life is about last days of life, loss, and grief, with a focus on how to care for everyone and support people in care and their family/whānau.



Fundamentals of Palliative Care Programme *(Continued)*

This is how these topics are broken down across the programme:

ONLINE LEARNING

Essence

Palliative care concepts and culture of care

The **online learning** will provide you with the fundamental information and skills for each topic. This includes questions, case studies and reflection activities to help you apply the learning to your own practice.

ONLINE LEARNING

The palliative care approach

Communication, ethics and spirituality

Managing pain and long-term illness

Pain, other symptoms and pharmacology
Chronic illness and dementia

Care and support at the end of life

Last days of life, grief, loss and caring for ourselves

WORKSHOPS

The palliative care approach

Managing pain and long-term illness

Care and support at the end of life

Evaluation

For most topics, you will have the chance to apply what you have learnt online in **one face-to-face workshop (No charge)**. (See below how to register)

You will take a deeper look and get the chance to collaborate with other healthcare workers.

Completing the programme

You need to complete each online learning and workshop component to complete the full programme. Start with Essence, then complete the other topics in any order.

Once you have completed a topic, you will receive a certificate from Knowledge Hub to recognise your achievement.

How to register for online learning

Follow this link knowledgehub.hospice.org.nz to register and enrol.

How to register for workshops

When you have completed the online learning, you can make a booking for a one day workshop (No charge) with your local Hospice (Nelson Tasman Hospice) via email at:

education@nelsonhospice.org.nz

or phone (03) 546 3950

Where to go for support

Your local Hospice Education Administrator can help you register for and access the online learning as well as register for the Fundamentals Workshop.

If you have technical issues using the website or you are an organisation requiring support, email education@nelsonhospice.org.nz

Hospice New Zealand Palliative Care Lecture Series

Hospice New Zealand offers a monthly webinar featuring guest speakers. This education opportunity is designed for healthcare professionals with an interest in palliative care.



Hospice New Zealand is working in partnership with Mobile Health Hub to deliver presentations via webinar at registered sites around the country on the **first Thursday of every month 7.30 to 8.30am** from ***February through to December**.

***The February lecture will be on Tuesday 11 February due to Waitangi day falling on the Thursday.**

The palliative care lecture series can easily be accessed by individuals via a smartphone, tablet or computer with an internet connection.

Register for the webinar via Hospice New Zealand website <https://www.hospice.org.nz/education-training/palliative-care-lecture-series/> or click this [link](#) and open the flyer to find the advertised session.

Following registration, you will receive an email confirming your registration and link to join the session. Certificates will be sent electronically by Mobile Health Hub to everyone who has registered and completed the feedback form (evaluation).

Target audience:	Health Care Professionals and Support Workers
Dates:	First Thursday of every month from February to December Please note, * The February lecture will be earlier on Tuesday 11 February due to Waitangi day falling on the Thursday
Time:	0730 – 0830 hrs.
Cost:	No charge
Registration is essential:	Register on the Hospice New Zealand website https://www.hospice.org.nz/education-training/palliative-care-lecture-series/

You can access previous palliative care lectures on the [Hospice New Zealand website](https://www.hospice.org.nz)



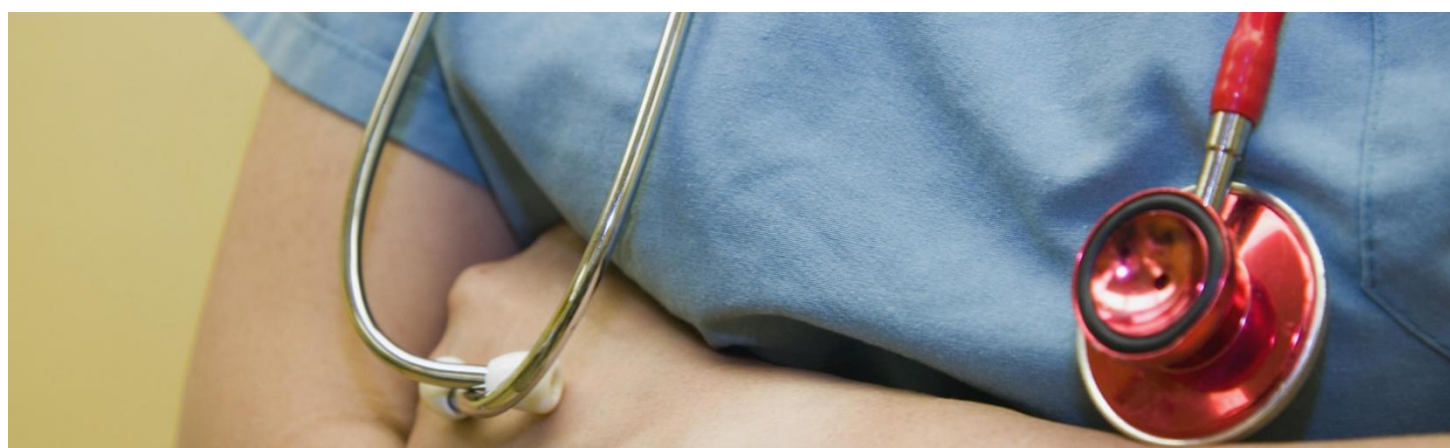
Hospice New Zealand Palliative Care Lecture Series Programme 2025



Date/Time	Presentation	Presenters
7:30-8:30am		
Lecture 1 Tuesday 11th February	Managing diabetes in Palliative and end-of-life care	Associate Professor Ryan Paul Endocrinologist at Te Whatu Ora and at the University of Waikato
Lecture 2 Thursday 6th March	Helping people with disabilities navigate end-of-life care	Dr Nic McKenzie Learning (intellectual) disability sector consultant and researcher Kim Fuller Clinical Nurse Consultant with IDEA Services National Clinical Team
Lecture 3 Thursday 3rd April	End of life needs and considerations for people with Dementia	Dr Michal Boyd Honorary Assoc. Professor Nurse Practitioner University of Auckland
Lecture 4 Thursday 1st May	Palliative Care for the Rainbow Community	Dr Lea Galvin Senior Clinical Psychologist Nelson Tasman Hospice
Lecture 5 Thursday 5th June	The grief and bereavement experience of family/whānau during and following assisted dying	Dr Aida Dekhoda PhD psychology, counsellor, Post-doctoral Research Fellow Victoria University of Wellington, Research Fellow, Department of Psychological Medicine, University of Auckland.
July to December to be advised		



Clinical Skills Series in Palliative Care



This series aims to provide education that will refresh or upskill all health care providers supporting persons with palliative care needs. The education sessions provide learning which maintains and enhances participants' palliative care knowledge, skills, and practice.

Target audience: Health Care Professionals and Support Workers or as advertised in promotional flyer

Cost: No charge

Limited attendees: Registration is essential

Venue: Nelson Tasman Hospice, 331 Suffolk Road, Stoke, Nelson

Register online: Register on our Hospice Website via Eventbrite <https://www.nelsonhospice.org.nz/education> or as advertised in the workshop promotional flyer. (Workshops are available to register for approximately one month prior to the date)

	Date:	Topic:	Time:
1	Tuesday 11 February	Pain Management in Palliative Care	1600 – 1715 hrs.
2	Tuesday 25 March	Nausea and Vomiting in Palliative care	1600 - 1715 hrs.
3	Wednesday 16 April	Te Whakapiri – End of Life pathway	1600 - 1715 hrs.
4	Thursday 22 May	Spirituality Mental Health in Palliative Care	1600 - 1715 hrs.
5	Wednesday 18 June	Pharmacology in Palliative Care	1600 - 1715 hrs.
6	Wednesday 23 July	Oral and Bowel Care in Palliative Care	1600 - 1715 hrs.
7	Tuesday 12 August	Malignant Wounds in Palliative Care	1600 - 1715 hrs.
8	Wednesday 24 September	Management of Bone Pain in Palliative Care	1600 - 1715 hrs.
9	Tuesday 28 October	End Stage Renal Failure (ESRD)	1600 - 1715 hrs.
10	Wednesday 19 November	Delirium in Palliative Care	1600 – 1715 hrs.
11	Wednesday 10 December	Sensory Modulation in Palliative Care	1600 – 1715 hrs.

Palliative Care for Caregivers

This workshop has been designed for Health Care Assistants & Support Workers working in Aged Residential Care or the community to improve their knowledge and understanding of palliative care. The education is endorsed by Hospice New Zealand. Participants must attend all four sessions to gain the Hospice New Zealand palliative care certificate.

* ***This programme is not suitable for family members/whānau looking after relatives or friends in a community setting.***

Topics covered include:

- Principles of palliative care
- Managing physical symptoms
- Care in the last days of life
- Communication
- Understanding loss and grief
- Spirituality and self-care



Target audience: Health Care Assistants (HCA's), Support Workers and Caregivers

Dates & times: As below (Attendees must attend **all four sessions** to the gain HNZ certificate)

*This programme is repeated throughout the year

Cost: No charge

Limited attendees: Registration is essential

Register online: Register on our Hospice Website via Eventbrite <https://www.nelsonhospice.org.nz/education> or as advertised in the workshop promotional flyer. (Workshops are available to register for approximately one month prior to the date)

Date:	Session 1 - 4	Time:	Date:	Session 1 - 4	Time:
Friday 7 March	Day 1 of 4	1000 - 1200 hrs.	Friday 1 August	Day 1 of 4	1000 - 1200 hrs.
Friday 14 March	Day 2 of 4	1000 - 1200 hrs.	Friday 8 August	Day 2 of 4	1000 - 1200 hrs.
Friday 21 March	Day 3 of 4	1000 - 1200 hrs.	Friday 15 August	Day 3 of 4	1000 - 1200 hrs.
Friday 28 March	Day 4 of 4	1000 - 1200 hrs.	Friday 22 August	Day 4 of 4	1000 - 1200 hrs.
Date:	Session 1 - 4	Time:	Date:	Session 1 - 4	Time:
Wednesday 4 June	Day 1 of 4	1300 - 1500 hrs.	Tuesday 4 November	Day 1 of 4	1000 - 1200 hrs.
Wednesday 11 June	Day 2 of 4	1300 - 1500 hrs.	Tuesday 11 November	Day 2 of 4	1000 - 1200 hrs.
Wednesday 18 June	Day 3 of 4	1300 - 1500 hrs.	Tuesday 18 November	Day 3 of 4	1000 - 1200 hrs.
Wednesday 25 June	Day 4 of 4	1300 - 1500 hrs.	Tuesday 25 November	Day 4 of 4	1000 - 1200 hrs.

Dying to Know about Dying Matters?



Many people find it difficult to talk about dying, yet dying is an important stage of life and is inevitable. We plan for the birth of a child, yet when it comes to the end of life, we don't often want to think about it, or talk about it.

Having a plan outlines our care preferences for the future. Having an Advance Care Plan (ACP) that aligns with our beliefs and values, is a gift that we can give to our family / whānau.

* Please note, this workshop is *not* designed for health professionals.

Planning for Death: Helpful information that Family/Whānau need to know. This is a FREE workshop available to the public who want to know more about end of life. Come along and find out more about dying matters, how an Advance Care Planning (ACP) can benefit you and your family/whānau, and what to expect at the end of life.

This forum will explore:

- Why is it hard to talk about death and dying?
- What to expect when someone is dying
- Supports available
- Advance Care Planning

**“Talking about it more,
worrying about it less”**

Target audience: General Public – (This workshop is not designed for Health Professionals)

Date: Thursday 20 February **Time:** 1300 – 1630

Repeated workshop: Friday 19 September **Time:** 0900 - 1230

Cost: No Charge

Limited attendees: Registration is essential

Register online: Register on our Hospice Website via Eventbrite <https://www.nelsonhospice.org.nz/education> or as advertised in the workshop promotional flyer. (Workshops are available to register for approximately one month prior to the date)

The Better Endings Project



What is the Better Endings Project?

The *Better Endings Project* is about educating the community on the basics of caring for people who are dying. This workshop is for the general public and not designed for health care professionals.

Who is the workshop for?

For the general public who find themselves supporting and caring for people approaching end of life, or those anticipating this situation.

What does Nelson Tasman Hospice offer?

The facilitators will give practical tips on how you can provide comfort to someone who is dying, and what you can do to plan for your own, and your family's end of life. It is an interactive workshop for up to 20 participants.

Participants will learn

- What to expect when someone is dying
- How compassionate communities can improve care of dying
- Why end of life planning is important and what resources are available
- Simple measures to provide comfort at end of life
- About the sanctity of the last hours/days of life and how to cope and support others after death

Target audience:	General Public – (This workshop is <i>not</i> designed for Health Professionals)
Cost:	No Charge
Limited attendees:	Registration is essential
Dates 2025:	Friday 4 April, Friday 11 July, Friday 3 October
Time:	0900 -1230
Register online:	Register on our Hospice Website via Eventbrite https://www.nelsonhospice.org.nz/education or as advertised in the workshop promotional flyer. (Workshops are available to register for approximately one month prior to the date) <i>Atawhaitia, Manaakitia Mō Ake Tonu ~ To Care Always</i>

Disability & Equity in Palliative Care



The Disabled Community makes up a significant and diverse part of Aotearoa. Disabled people experience inequitable physical and mental health outcomes and levels of distrust of health care are high within the community. This workshop will equip health providers with tools to communicate with, and work alongside disabled people in their health journey in an equitable manner.

This forum will explore:

- Disability as an identity and culture
- Our implicit bias we all are conditioned to hold about disabled people
- Language – what to say, what not to say
- Legislation that is relevant to health professionals when working with the disabled community
- Practical approaches that will ensure your practice is equitable for disabled people

Target audience: Health Professionals

Date: Tuesday 17 June

Presenter: Dr Lea Galvin Ph.D. Clinical Services Manager/Clinical Psychologist

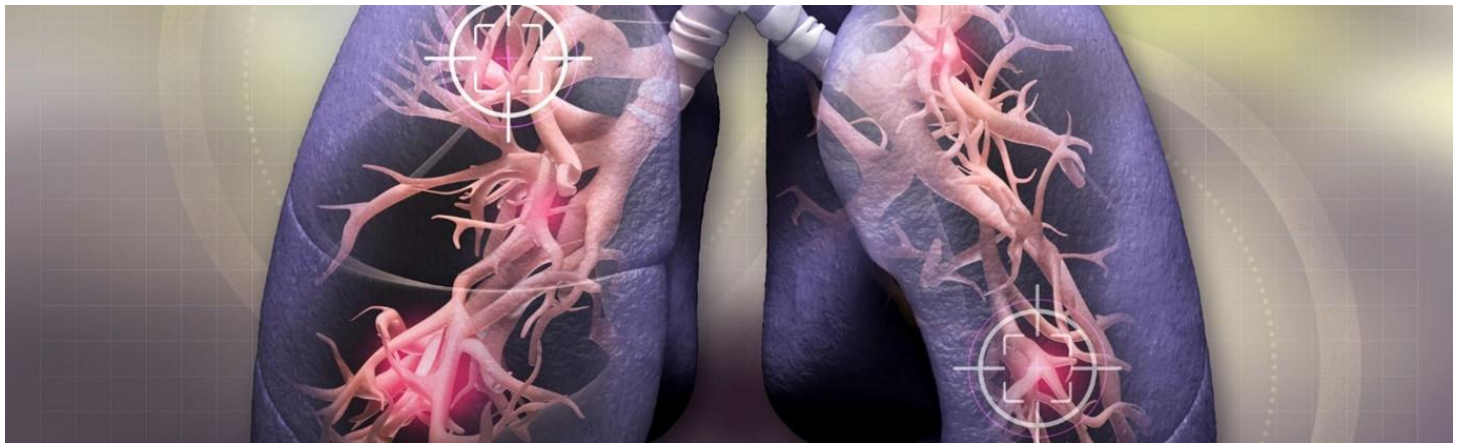
Time: 0900 - 1500

Cost: \$80.00 (incl. GST per person) BYO lunch (Tea & coffee and a light morning tea will be provided)

Limited attendees: Registration is essential

Register online: Register on our Hospice Website via Eventbrite <https://www.nelsonhospice.org.nz/education> or as advertised in the workshop promotional flyer. *(Workshops are available to register for approximately one month prior to the date)*

Lung Cancers in Palliative Care



In New Zealand, lung cancer causes more deaths than any other cancer, more than breast, prostate and melanoma combined. More than 1800 New Zealanders die from lung cancer each year. The reason that lung cancer has such a high mortality is that 74% of the patients present with advanced lung cancer on initial diagnosis (Cancer Research Trust , NZ).

Symptoms of lung cancer are varied and supporting people with advanced disease requires a holistic approach.

This workshop will look at:

- Understanding lung cancers and treatment options
- Best practice symptom management
- Understanding stigma and the social and family/ whānau implications

Target audience: Health Professionals

Date: Friday 25 July

Time: 0900 - 1500

Cost: \$80.00 (incl. GST per person) BYO lunch (Tea & coffee and a light morning tea will be provided)

Limited attendees: Registration is essential

Register online: Register on our Hospice Website via Eventbrite <https://www.nelsonhospice.org.nz/education> or as advertised in the workshop promotional flyer. *(Workshops are available to register for approximately one month prior to the date)*

Supporting Rural Communities in Palliative Care



It is well recognised there is inconsistent provision of palliative and end-of-life care across New Zealand, particularly in rural and remote areas. Palliative care improves quality of life and the experience of dying, and all people should have equitable access to quality needs-based care as they approach and reach the end of their lives. A palliative approach to care is crucial in rural New Zealand where there is a reliance for such care on generalist providers amid the challenges of a limited workforce, poorer access, and vast geography.

Providing palliative care (PC) in rural settings is challenging due to limitations on training, staff, resources, and funding. Rural populations tend to be older, have higher mortality, more likely to suffer from a chronic condition, physical disability and be of lower socioeconomic status than those in urban areas.

This forum will explore:

- What does the research say about the palliative care needs of those in rural settings?
- What are the challenges of palliative care provision in rural settings?
- What are the strengths of rural communities and building a compassionate community?
- Models and guidance for how best to provide PC in rural settings
- How to communicate effectively with rural communities
- How to provide practical carer support with limited resources

Target audience: Palliative Care Providers in Rural Communities

Date: Wednesday 29 October

Time: 0900 - 1500

Cost: \$80.00 (incl. GST per person) BYO Lunch

Limited attendees: Registration is essential

Register online: Register on our Hospice Website via Eventbrite <https://www.nelsonhospice.org.nz/education> or as advertised in the workshop promotional flyer. (Workshops are available to register for approximately one month prior to the date)

Calendar 2025

January	Workshop	Time	Target Audience	Cost (incl. GST)
Thursday 16	Aged Residential Care (ARC) Syringe Driver	1000 - 1200	RNs/DNs/ARC/ENs	No charge
February				
Tuesday 11	Hospice New Zealand Palliative Care Lecture Series (Webinar)	0730 - 0830	Health Care Professionals	No charge
Tuesday 11	Clinical Skills: Pain Management	1600 - 1715	Health Care Professionals & Support Workers	No charge
Tuesday 18	Health New Zealand Te Whatu Ora Syringe driver (Nelson Hospital)	1300 - 1500	Registered Nurses and Enrolled nurses employed by Health NZ Te Whatu Ora	No charge
Friday 14	Aged Residential Care Syringe Driver	1000 - 1200	RNs/DNs/ARC/ENs	No charge
Thursday 20	Dying to Know about Dying Matters	1300 - 1630	General Public – Not designed for Health Professionals	No charge
March				
Thursday 6	Hospice New Zealand Palliative Care Lecture Series (Webinar)	0730 - 0830	Health Care Professionals	No charge
Friday 7	Palliative Care for Caregivers Day 1 of 4	1000 - 1200	Health Care Assistants, Support Workers & Caregivers	No charge
Tuesday 11	Aged Residential Care Syringe Driver	1300 - 1500	RNs/DNs/ARC/ENs	No charge
Friday 14	Palliative Care for Caregivers Day 2 of 4	1000 - 1200	Health Care Assistants, Support Workers & Caregivers	No charge
Friday 21	Palliative Care for Caregivers Day 3 of 4	1000 - 1200	Health Care Assistants, Support Workers & Caregivers	No charge
Tuesday 25	Clinical Skills: Nausea & Vomiting	1600 - 1715	Health Care Professionals & Support Workers	No charge
Friday 28	Palliative Care for Caregivers Day 4 of 4	1000 - 1200	Health Care Assistants, Support Workers & Caregivers	No charge
April				
Friday 4	The <i>Better Endings Project</i>	0900 - 1230	General Public	No charge
Thursday 3	Hospice New Zealand Palliative Care Lecture Series (Webinar)	0730 - 0830	Health Care Professionals	No charge
Friday 11	Aged Residential Care (ARC) Syringe Driver	1300 - 1500	RNs/DNs/ARC/ENs	No charge
Wednesday 16	Clinical Skills: Te Ara Whakapiri – End of Life Pathway	1600 - 1715	Health Care Professionals & Support Workers	No charge
May				
Thursday 1	Hospice New Zealand Palliative Care Lecture Series (Webinar)	0730 - 0830	Health Care Professionals	No charge
Wednesday 7	Aged Residential Care (ARC) Syringe Driver	1000 - 1200	RNs/DNs/ARC/ENs	No charge
Thursday 22	Clinical Skills: Spirituality Mental Health in Palliative Care	1600 - 1715	Health Care Professionals & Support Workers	No charge

Calendar 2025



June	Workshop	Time	Target Audience	Cost (incl. GST)
Wednesday 4	Palliative Care for Caregivers Day 1 of 4	1300 - 1500	Health Care Assistants, Support Workers & Caregivers	No charge
Thursday 5	Hospice New Zealand Palliative Care Lecture Series (Webinar)	0730 - 0830	Health Care Professionals	No charge
Wednesday 11	Palliative Care for Caregivers Day 2 of 4	1300 - 1500	Health Care Assistants, Support Workers & Caregivers	No charge
Wednesday 11	Health New Zealand Te Whatu Ora Syringe driver (Nelson Hospital)	1300 - 1500	Registered Nurses and Enrolled nurses employed by Health NZ Te Whatu Ora	No charge
Tuesday 17	Disability & Equity in Palliative Care	0900 – 1500	Health Care Professionals	\$80
Wednesday 18	Palliative Care for Caregivers Day 3 of 4	1300 - 1500	Health Care Assistants, Support Workers & Caregivers	No charge
Wednesday 18	Clinical Skills: Pharmacology in Palliative Care	1600 - 1715	Health Care Professionals & Support Workers	No charge
Wednesday 19	Aged Residential Care (ARC) Syringe Driver	1300 - 1500	RNs/DNs/ARC/ENs	
Wednesday 25	Palliative Care for Caregivers Day 4 of 4	1300 - 1500	Health Care Assistants, Support Workers & Caregivers	No charge
July				
Thursday 3	Hospice New Zealand Palliative Care Lecture Series (Webinar)	0730 - 0830	Health Care Professionals	No charge
Friday 11	The <i>Better Endings Project</i>	0900 - 1230	General Public – Not designed for Health Professionals	No charge
Thursday 17	Aged Residential Care Syringe Driver	1000 - 1200	RNs/DNs/ARC/ENs	No charge
Wednesday 23	Clinical Skills: Oral & Bowel Care in Palliative Care	1600 - 1715	Health Care Professionals & Support Workers	No charge
Friday 25	Lung Cancers in Palliative Care	0900 -1500	Health Care Professionals	\$80
August				
Friday 1	Palliative Care for Caregivers Day 1 of 4	1000 - 1200	Health Care Assistants, Support Workers & Caregivers	No charge
Thursday 7	Hospice New Zealand Palliative Care Lecture Series (Webinar)	0730 - 0830	Health Care Professionals	No charge
Friday 8	Palliative Care for Caregivers Day 2 of 4	1000 - 1200	Health Care Assistants, Support Workers & Caregivers	No charge
Tuesday 12	Clinical Skills: Malignant Wounds in Palliative Care	1600 - 1715	Health Care Professionals & Support Workers	No charge
Friday 15	Palliative Care for Caregivers Day 3 of 4	1000 - 1200	Health Care Assistants, Support Workers & Caregivers	No charge

Calendar 2025



August (Continued)	Workshop	Time	Target Audience	Cost (incl. GST)
Thursday 21	Aged Residential Care (ARC) Syringe Driver (Motueka)	1300 -1500	RNs/DNs/ARC/ENs	No charge
Friday 22	Palliative Care for Caregivers Day 4 of 4	1000 - 1200	Health Care Assistants, Support Workers & Caregivers	No charge
September				
Thursday 4	Hospice New Zealand Palliative Care Lecture Series (Webinar)	0730 - 0830	Health Care Professionals	No charge
Tuesday 16	Aged Residential Care (ARC) Syringe Driver	1300 - 1500	RNs/DNs/ARC/ENs	No charge
Friday 19	Dying to Know about Dying Matters	0900 - 1230	General Public	No charge
Wednesday 24	Clinical Skills: Management of Bone Pain in Palliative Care	1600 - 1715	Health Care Professionals & Support Workers	No charge
October				
Thursday 2	Hospice New Zealand Palliative Care Lecture Series (Webinar)	0730 - 0830	Health Care Professionals	No charge
Friday 3	<i>The Better Endings Project</i>	0900 - 1230	General Public	No charge
Tuesday 28	Clinical Skills: End Stage Renal Failure (ESRD)	1600 - 1715	Health Care Professionals & Support Workers	No charge
Wednesday 29	Supporting Rural Communities in Palliative Care	0900 -1500	Health Care Professionals	\$80
Thursday 30	Aged Residential Care (ARC) Syringe Driver	1300 - 1500	RNs/DNs/ARC/ENs	No Charge
November				
Tuesdays 4, 11, 18, 25	Palliative Care for Caregivers Sessions 1 – 4 for 4 weeks.	1000 - 1200	Health Care Assistants, Support Workers & Caregivers	No charge
Wednesday 5	Aged Residential Care Syringe Driver	1000 - 1200	RNs/DNs/ARC/ENs	No Charge
Thursday 6	Hospice New Zealand Palliative Care Lecture Series (Webinar)	0730 - 0830	Health Care Professionals	No charge
Wednesday 26	Health New Zealand Te Whatu Ora Syringe driver (Hospital)	1300 - 1500	Registered Nurses and Enrolled nurses employed by Health NZ Te Whatu Ora	No charge
Wednesday 19	Clinical Skills: Delirium in Palliative Care	1600 - 1715	Health Care Professionals & Support Workers	No charge
December				
Thursday 4	Hospice New Zealand Palliative Care Lecture Series (Webinar)	0730 - 0830	Health Care Professionals	No charge
Wednesday 10	Clinical Skills: Sensory Modulation in Palliative Care	1600 - 1715	Health Care Professionals & Support Workers	No charge
Thursday 11	Aged Residential Care (ARC) Syringe Driver (Motueka)	1300 - 1500	RNs/DNs/ARC/ENs	No charge



To view education workshops